

**SECTION 12 93 13 \_ BICYCLE RACKS**    University Contact:    *UD Assistant Director of Grounds:*  
*Office (302) 831-2797*  
*UD Landscape Planner:*  
*Office (302) 831-1817*

**PART 1 – GENERAL**

Information in this Section is to be followed unless otherwise directed by University of Delaware (UD) Owner Representative and UD Grounds Representative (Assistant Director of Grounds or Landscape Planner).

**1.1 SUMMARY**

- A. This section contains information regarding the model and specifications for the layout and installation of bike racks.

**1.2 RELATED SECTIONS AND REFERENCES**

- A. See also 4E\_DIVISION\_32\_321623\_Sidewalks\_Pedestrian Paths for information about the paver pad.

**1.3 DESIGN REQUIREMENTS**

- A. Should be conveniently located with sufficient number, location and spacing to encourage their use. Ideally, close to entryways, but not placed so that the entry experience is necessarily flanked by bike parking.
- B. A general guideline is to provide one bike rack per three building occupants.
- C. Bike racks should be placed near PDI entry doors and adjacent to pedestrian paths in a manner that does not block circulatory routes or snow plow access.
- D. Bike rack areas should be provided good site lighting and, wherever possible, in view of security cameras.
- E. Typical spacing is no less than 36” on center; adjust per site conditions and with prior approval.
- F. Bike Racks should be installed on either concrete or paver pads. See also 4E\_DIVISION\_32\_321623\_Sidewalks\_Pedestrian Path for pad details. Pad should be a minimum of 8 ft. deep to enable snow plow access around a bike if it remains attached to the rack.

- 1. When bike rack paver pads are placed in lawn areas, bike racks need to be installed with a minimum of 20” from edge of rack to edge of pavers, to allow for overhang of bike tires.

**PART 2 – PRODUCTS**

**2.1 Secure Site Design, LLC**

Model: BRWS-101Cycle Sentry Series  
Options: in-ground mount (preferred); surface mount is available.  
Color: Black Powder Coat  
Capacity: 2 bikes

**Manufacturer:**  
P.O. Box 6091  
Potomac, MD 20859  
Phone: (888)268-4726; (410) 286-3375  
Fax: (410) 479-0175  
[www.securesitedesign.com](http://www.securesitedesign.com)

**PART 3 EXECUTION (no content)**

**PART 4 – ATTACHMENTS**

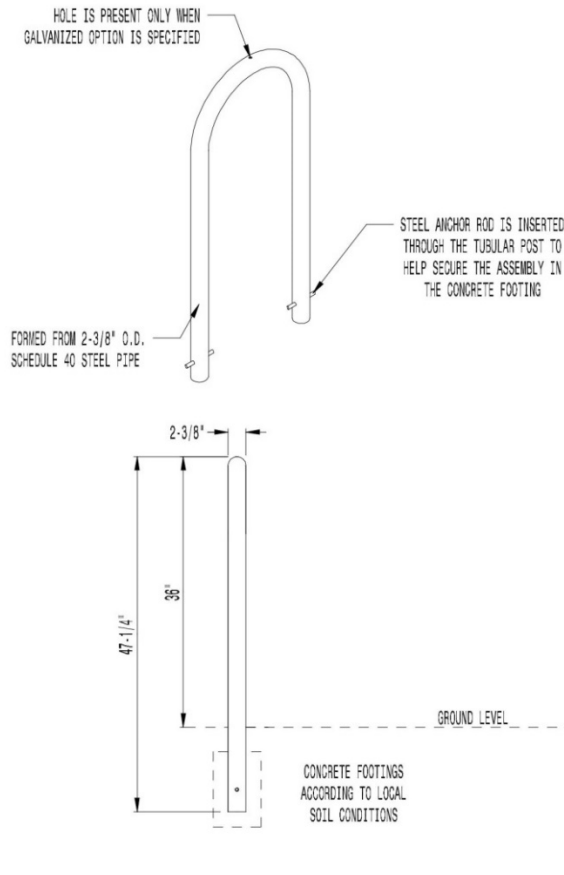
**4.1 Location: Student Services Building, Lovett Ave. Installed in Pavers**



**4.2 Location: Reading Dormitory Complex Installed in Concrete Pad**



4.3 In-Ground Mount (Preferred)



TOLL FREE (USA & CANADA): 1-888-ANTI-RAM (888-268-4726)  
 410-286-3375 : FAX 410-478-0176  
 P.O. BOX 60910,  
 POTOMAC, MD 20859 U.S.A.  
 INFO@SECURESITEDESIGN.COM  
 WWW.SECURESITEDESIGN.COM

AVAILABLE OPTIONS:

POWDER COATING

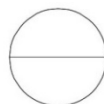
11 AVAILABLE COLORS, CUSTOM COLORS (INCLUDING THE RAL RANGE AT AN ADDITIONAL COST)  
 OTHER FINISHES: GALVANIZED, STAINLESS STEEL (SPECIAL QUOTE NEEDED)

MOUNTINGS OPTIONS:

STANDARD IN-GROUND (AS SHOWN) AND SURFACE MOUNT WITH ROUND FLANGE

NOTES:

1. DRAWINGS NOT TO SCALE. DO NOT SCALE DRAWINGS.
2. ALL FABRICATED METAL COMPONENTS ARE STEEL SHOTBLASTED, ETCHED, PHOSPHATIZED, PREHEATED, AND ELECTROSTATICALLY POWDER-COATED WITH T.G.I.C. POLYESTER POWDER COATINGS. PRODUCTS ARE FULLY CLEANED AND PREHEATED, PREHEATED AND COATED WHILE HOT TO FILL CREVICES AND BUILD COATING FILM. COATED PARTS ARE THEN FULLY CURED TO COATING MANUFACTURER'S SPECIFICATIONS. THE THICKNESS OF THE RESULTING FINISH AVERAGES 8-10 MILS (200-250 MICRONS).
3. THIS SECURE SITE DESIGN, LLC. PRODUCT MUST BE PERMANENTLY AFFIXED IN THE GROUND. CONSULT YOUR LOCAL CODES FOR REGULATIONS.
4. ALL SPECIFICATIONS ARE SUBJECT TO CHANGE. CONTACT MANUFACTURER FOR DETAILS.
5. THIS PRODUCT IS SHIPPED FULLY ASSEMBLED.



BRWS-101

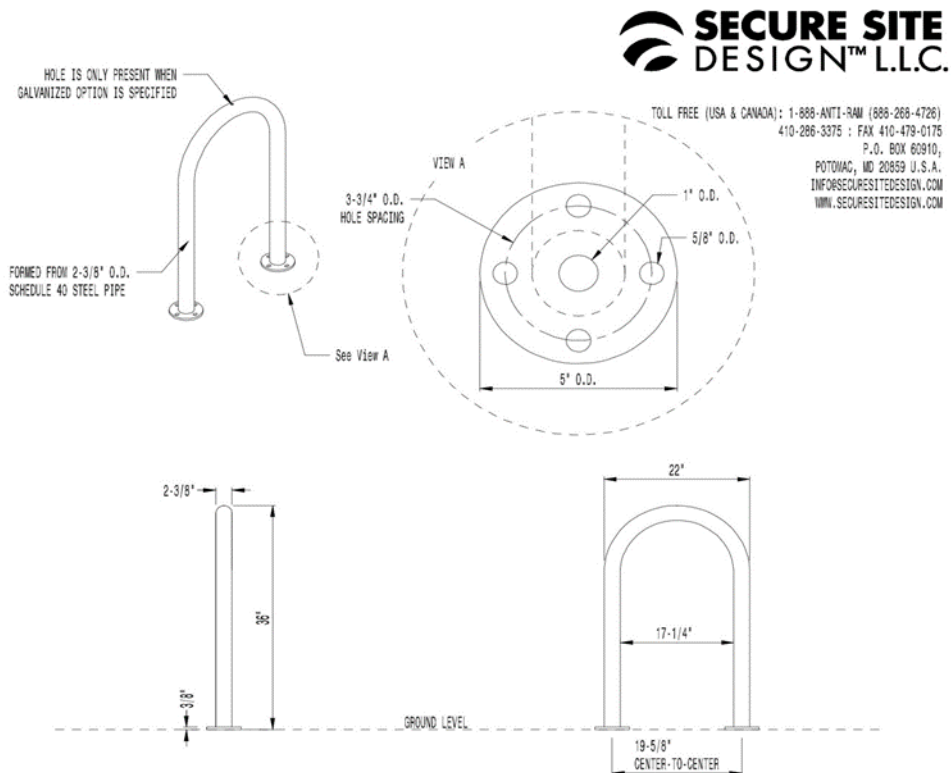
CYCLE SENTRY™ SERIES

BIKE RACK  
 SHOWN: STANDARD IN-GROUND MOUNT

**4.4 Surface Mount**

In-ground mount is the preferred and recommended installation standard, except only when site conditions require a surface mount option. For surface mount:

1. Use only stainless steel bolts and nuts.
2. Apply "Never Seize" to bolt threads.
3. Bolts should be vandal resistant and not less than 4" long.
4. If being installed into a paver area, a concrete footer shall be poured in place (no less than 8" wide x 24" long x 18" deep).



TOLL FREE (USA & CANADA): 1-888-ANTI-RAM (888-268-4726)  
 410-286-3375 : FAX 410-479-0175  
 P.O. BOX 60910,  
 POTOMAC, MD 20859 U.S.A.  
 INFO@SECURESITEDESIGN.COM  
 WWW.SECURESITEDESIGN.COM

**AVAILABLE OPTIONS:**

**POWDER COATING**

11 AVAILABLE COLORS, CUSTOM COLORS (INCLUDING THE RAL RANGE AT AN ADDITIONAL COST)  
 OTHER FINISHES: GALVANIZED, STAINLESS STEEL (SPECIAL QUOTE NEEDED)

**MOUNTINGS OPTIONS:**

STANDARD IN-GROUND AND SURFACE MOUNT WITH ROUND FLANGE (AS SHOWN)

**NOTES:**

1. DRAWINGS NOT TO SCALE. DO NOT SCALE DRAWINGS.
2. ALL FABRICATED METAL COMPONENTS ARE STEEL SHOTBLASTED, ETCHED, PHOSPHATIZED, PREHEATED, AND ELECTROSTATICALLY POWDER-COATED WITH T.G.I.C. POLYESTER POWDER COATINGS. PRODUCTS ARE FULLY CLEANED AND PREHEATED, PREHEATED AND COATED WHILE HOT TO FILL CREVICES AND BUILD COATING FILM. COATED PARTS ARE THEN FULLY CURED TO COATING MANUFACTURER'S SPECIFICATIONS. THE THICKNESS OF THE RESULTING FINISH AVERAGES 8-10 MILS (200-250 MICRONS).
3. IT IS NOT RECOMMENDED TO LOCATE ANCHOR BOLTS UNTIL THE BIKE RACK IS IN PLACE. THIS SECURE SITE DESIGN, L.L.C. PRODUCT MUST BE PERMANENTLY AFFIXED TO THE GROUND. CONSULT YOUR LOCAL CODES FOR REGULATIONS.
4. ANCHOR BOLTS NOT PROVIDED BY SECURE SITE DESIGN L.L.C.
5. ALL SPECIFICATIONS ARE SUBJECT TO CHANGE. CONTACT MANUFACTURER FOR DETAILS.
6. THIS PRODUCT IS SHIPPED FULLY ASSEMBLED.



**BRWS-101**

CYCLE SENTRY® SERIES

BIKE RACK  
 SHOWN: STANDARD SURFACE MOUNT

**END OF SECTION**